

DGP



Set-back vortex impeller

All product images are indicative only

General characteristics

Set-back vortex impeller	
motor power	4,6 ÷ 16,4 kW
poles	2 / 4
discharge	DN80 ÷ DN125
free passage	max 102 mm
max flow rate	101.4 l/s
max head	17.9 m

Electromechanical assembly

Electromechanical assembly in GJL-250 cast iron, for submerged operation. Seal set comprising 2 (two) silicon carbide mechanical seals installed in series in inspectable oil sump and 1 (one) opposed graphite-alumina lip seal lubricated by the motor oil. Oil bath motor.

Applications

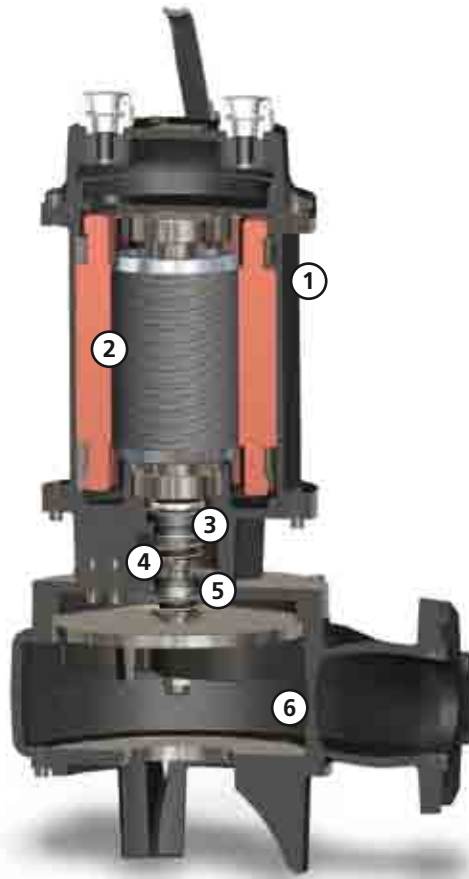
Used with unstrained soiled biological wastewaters and sewage and for civil lifting applications. It is thus ideal for heavy-duty applications in wastewater treatment plants, sewer systems, livestock farms, industry and agriculture.

Construction materials

Case	Cast iron EN-GJL 250
Impeller	Cast iron EN-GJL-250
Nuts and bolts	Stainless steel - Class A2-70
Standard gasket	Rubber - NBR
Shaft	Stainless steel - AISI 420
Cooling jacket	Carbon steel or AISI 304 stainless steel
Paint type	Ecological bicomponent epoxy (medium thickness 150 µm)
Set of standard mechanical seals	Two silicon carbide mechanical seals (2SiC) and one carbon-aluminium oxide mechanical seal (AL)

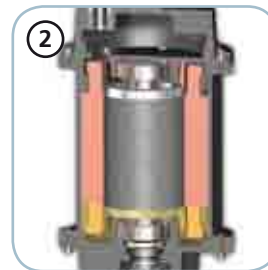
Operating limits

Maximum operating temperature	40 °C
PH of treated fluid	6 ÷ 14
Viscosity of treated fluid	1 mm ² /s
Maximum immersion depth	20 m
Density of treated fluid	1 Kg/dm ³
Maximum acoustic pressure	70 dB
max starts per hour	20



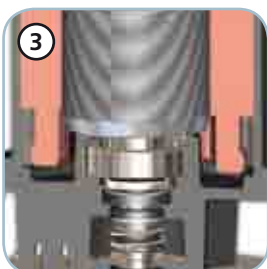
Structure

Constructed in GJL-250 cast iron.



Motor

Oil-bath motor with thermal protections.



Bearings

Shielded ball bearings with lifetime autolubrication.



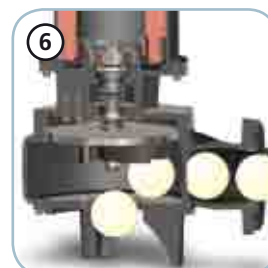
Mechanical seals

Two mechanical seals in silicon carbide (2SiC) and one mechanical seal in alumina graphite (AL) for maximum reliability even in heavy-duty applications.



Oil sump

Large oil sump to guarantee longer mechanical seal lifetime.



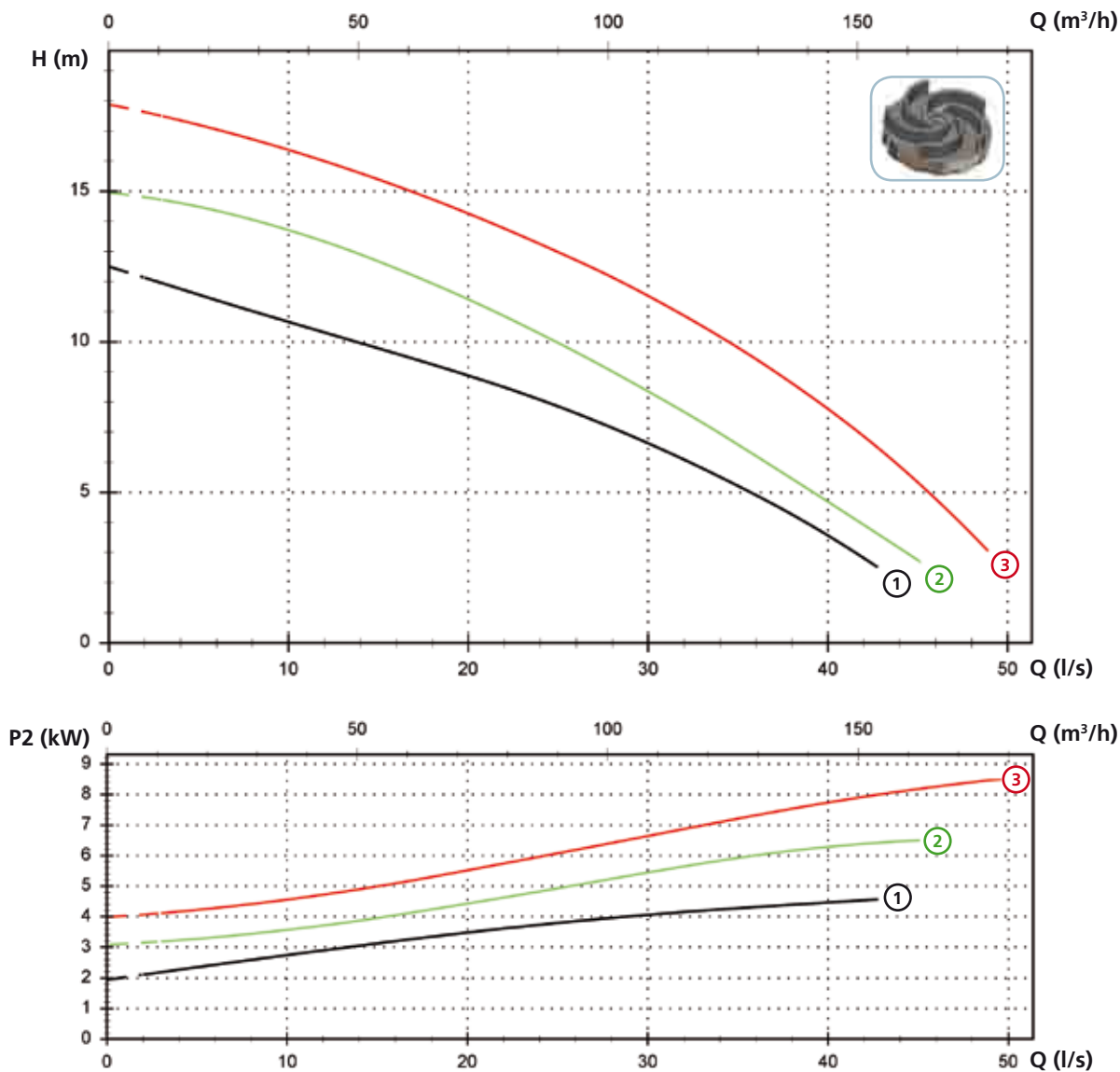
Free passage

Wide free passage allowing the expulsion of solids and preventing fouling of the impeller.

DGP

Models with horizontal DN80 PN10-16 flanged discharge - 4 poles

Performances

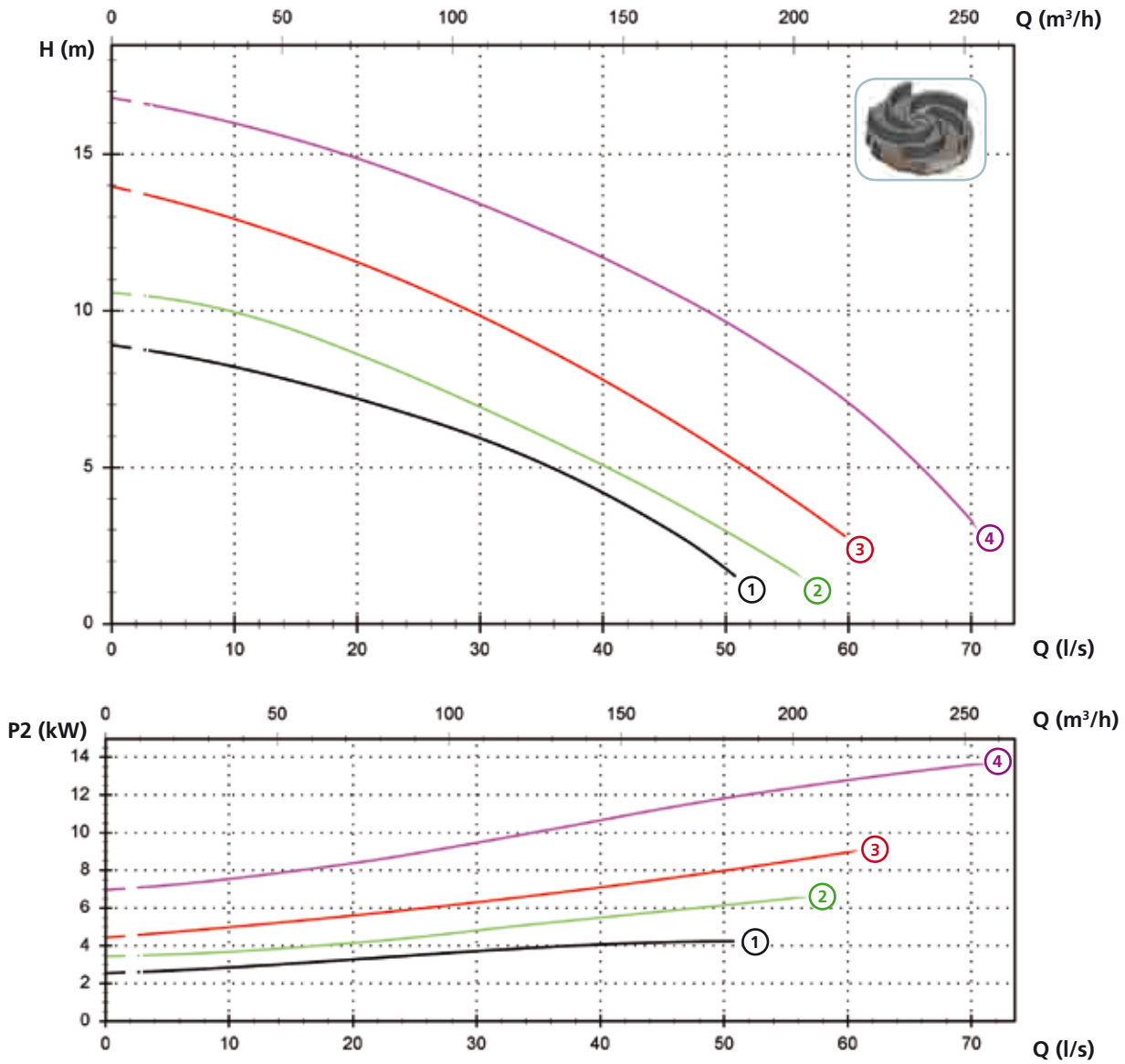


Technical data

	V	Phases	P1 (kW)	P2 (kW)	A	Rpm	Start	Ø	Free passage
① DGP 550/4/80 A0GT/50	400	3	5.9	4.6	10.1	1450	Dir	DN80 PN10-16	60 mm
② DGP 750/4/80 A0HT/50	400	3	8.6	6.5	14.9	1450	YΔ	DN80 PN10-16	60 mm
③ DGP 1000/4/80 A0HT/50	400	3	11.5	8.9	20	1450	YΔ	DN80 PN10-16	60 mm

Models with horizontal DN100 PN10-16 flanged discharge - 4 poles

Performances



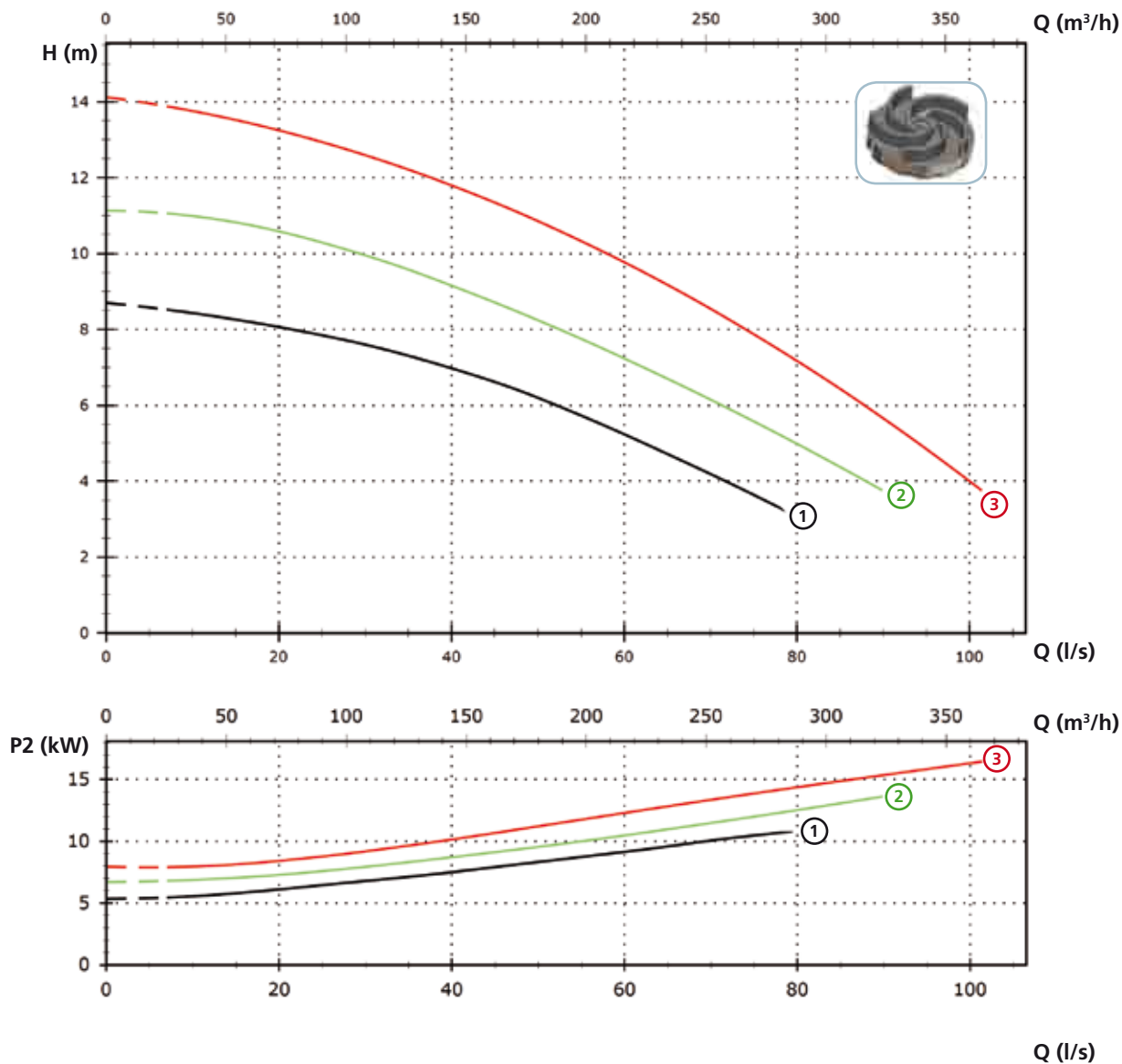
Technical data

	V	Phases	P1 (kW)	P2 (kW)	A	Rpm	Start	Ø	Free passage	
①	DGP 550/4/100 A0GT/50	400	3	5.9	4.6	10.1	1450	Dir	DN100 PN10-16	80 mm
②	DGP 750/4/100 A0HT/50	400	3	8.6	6.5	14.9	1450	YΔ	DN100 PN10-16	85 mm
③	DGP 1000/4/100 A0HT/50	400	3	11.5	8.9	20	1450	YΔ	DN100 PN10-16	85 mm
④	DGP 1500/4/100 A0IT/50	400	3	15.8	13.6	28.2	1450	YΔ	DN100 PN10-16	80 mm

DGP

Models with horizontal DN125 PN10 flanged discharge - 4 poles

Performances



Technical data

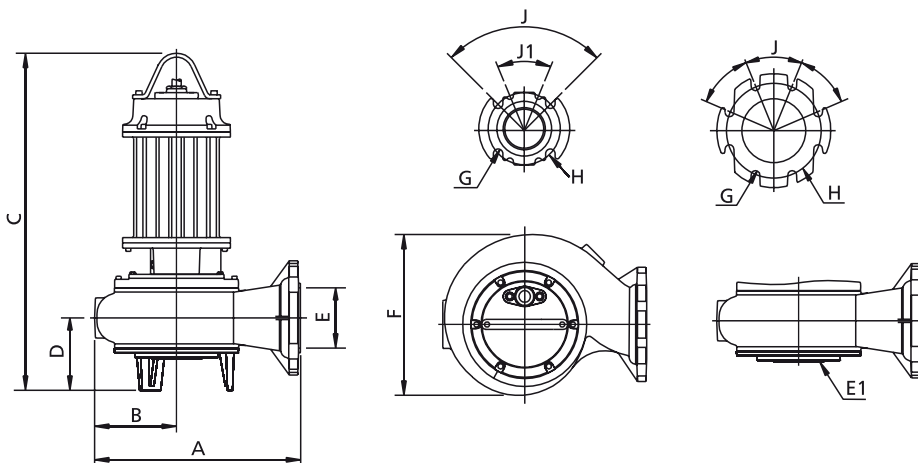
	V	Phases	P1 (kW)	P2 (kW)	A	Rpm	Start	Ø	Free passage
① DGP 1000/4/125 A0HT/50	400	3	11.5	8.7	20	1450	YΔ	DN125 PN10	98 mm
② DGP 1500/4/125 A0IT/50	400	3	15.8	13.6	28.2	1450	YΔ	DN125 PN10	102 mm
③ DGP 2000/4/125 A0IT/50	400	3	20.7	16.4	36	1450	YΔ	DN125 PN10	102 mm

Versions available

(Key to versions on page 16)

	Electrical variants										Cooling				Mechanical seals					
	N A E	T	T C	T C D	T C D T	T C D G T	T C G	T C S T	T C S G T	T S	T R	T R G	N	CC CCE	FT	C G F T	2SIC	SICM	SICAL	2SICAL
DGP 550/4/80 A0GT/50	●									●			●	●						●
DGP 750/4/80 A0HT/50	●									●			●	●						●
DGP 1000/4/80 A0HT/50	●									●			●	●						●
DGP 550/4/100 A0GT/50	●									●			●	●						●
DGP 750/4/100 A0HT/50	●									●			●	●						●
DGP 1000/4/100 A0HT/50	●									●			●	●						●
DGP 1500/4/100 A0IT/50	●									●			●	●						●
DGP 1000/4/125 A0HT/50	●									●			●	●						●
DGP 1500/4/125 A0IT/50	●									●			●	●						●
DGP 2000/4/125 A0IT/50	●									●			●	●						●

Overall dimensions and weights



	A	B	C	D	E	E1 (*)	F	G	H	J	J1	kg
DGP 550/4/80 A0GT/50	390	150	725	150	80	-	290	18	160	90°	45°	81
DGP 750/4/80 A0HT/50	445	175	810	155	80	DN80 PN6	340	18	160	90°	45°	122
DGP 1000/4/80 A0HT/50	445	175	810	155	80	DN80 PN6	340	18	160	90°	45°	130
DGP 550/4/100 A0GT/50	415	160	740	155	100	-	310	18	180	45°	-	84
DGP 750/4/100 A0HT/50	430	165	820	160	100	DN100 PN6	335	18	180	45°	-	115
DGP 1000/4/100 A0HT/50	430	165	820	160	100	DN100 PN6	335	18	180	45°	-	125
DGP 1500/4/100 A0IT/50	430	165	970	160	100	DN100 PN6	335	18	180	45°	-	165
DGP 1000/4/125 A0HT/50	580	280	890	200	125	DN150 PN10	555	18	210	90°	-	180
DGP 1500/4/125 A0IT/50	580	280	1010	200	125	DN150 PN10	555	18	210	90°	-	199
DGP 2000/4/125 A0IT/50	580	280	1010	200	125	DN150 PN10	555	18	210	90°	-	216

Dimensions in mm

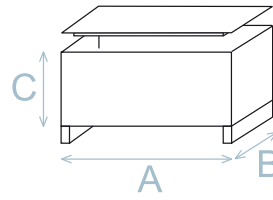
All weights and dimensions are indicative only

(*) Suction flange available upon request

DGP

Packaging dimension

	A	B	C
DGP 550/4/80 A0GT/50	725	445	415
DGP 750/4/80 A0HT/50	915	515	555
DGP 1000/4/80 A0HT/50	915	515	555
DGP 550/4/100 A0GT/50	725	445	415
DGP 750/4/100 A0HT/50	915	515	555
DGP 1000/4/100 A0HT/50	915	515	555
DGP 1500/4/100 A0IT/50	915	515	555
DGP 1000/4/125 A0HT/50	915	515	555
DGP 1500/4/125 A0IT/50	1165	720	685
DGP 2000/4/125 A0IT/50	1165	720	685



Dimension in mm

All weights and dimensions are indicative only

Installations available

